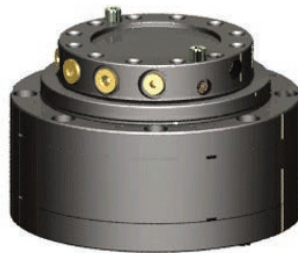


## Greiferrotatoren



Model	Max. Axiallast	Montage	Gewicht	erf. Ölfluss
GR 10	1000 kg	Welle - 39,5 mm / Bolzen 20 mm	10 kg	10 liter
GR 30	3000 kg	Welle - 49,5 mm / Bolzen 25 mm	18 kg	20 liter
GR 30 - PF	3000 kg	Flansch 140 x 140 mm - 4-Loch	24 kg	20 liter
GR 46	4500 kg	Welle - 59 mm / Bolzen 30 mm	23 kg	20 liter
GR 46 / 68	4500 kg	Welle - 68 mm / Bolzen 30 mm	29 kg	22 liter
GR 463	4500 kg	Flansch 173 mm - 4-Loch	27 kg	20 liter
GR 465	4500 kg	Flansch 140 x 140 mm - 4-Loch	27 kg	20 liter
GR 55 M	5500 kg	Welle - 69 mm / Bolzen 30 mm	29 kg	22 liter
GR 55 FF	5500 kg	Flansch 140 x 140 mm - 4-Loch	35 kg	22 liter
GR 55 MF	5500 kg	Flansch 173 mm - 6-Loch	36 kg	22 liter
GR 60 DB	6000 kg	Welle - 68 mm / Bolzen 30 mm	36 kg	25 liter
GR 603 DB	6000 kg	Flansch 173 mm - 6-Loch	43 kg	25 liter
GR 104 DB	10.000 kg	Flansch 173 mm - 6-Loch	59 kg	30 liter
GR 105 DB	10.000 kg	Flansch 173 mm - 6-Loch	62 kg	30 liter
GR 110 - 1 DB	10.000 kg	Welle - 78 mm / Bolzen 35 mm	50 kg	30 liter
GR 110 - 2 DB	10.000 kg	Welle - 78 mm / Bolzen 35 mm	54 kg	30 liter
GR 12 S	12.000 kg	Flansch 173 mm - 6-Loch	70 kg	35 liter
GR 16 S	16.000 kg	Flansch 173 mm - 6-Loch	71 kg	40 liter

## Festanbaurotatoren



Model	Max. Axiallast	Max. Radiallast	Gewicht	erforderlicher Ölfluss
CPR 5	5000 kg	3600 kg	45 kg	15 liter
CPR 8	8000 kg	6000 kg	87 kg	30 liter
CPR 9	9000 kg	7000 kg	86 kg	30 liter
CPR 14	14000 kg	10000 kg	150 kg	35 liter
CPR 15	15000 kg	11000 kg	160 kg	35 liter

## Aufhängungen / Gelenke

Model	Pendelbremse	passend zu Rotator
BR 1	-	GR 10 - GR 55
BR 10	✓	GR 10 - GR 55
BR 4 (für Palfinger)	-	GR 10 - GR 55
BR 40 (für Palfinger)	✓	GR 10 - GR 55
BR 2	-	GR 60 - GR 110
BR 20 KS	✓	GR 60 - GR 110
BR 3	-	GR 12 - GR 16
BR 30 KS	✓	GR 12 - GR 16
BR 22 KS	✓✓	GR 60 - GR 110
BR 32 KS	✓✓	GR 12 - GR 16

